

**B r i t i s h
c o l o u r s
& t e x t i l e s**

spring - summer 2020

B r i t i s h c o l o u r s & t e x t i l e s

spring - summer 2020

Today's consumers are living by new standards.

We look with fresh eyes at the fundamental issues that are important to us, and indeed to the planet. Craving escape from complex lifestyles, we are seeking deeper connections and a sense of meaning. In an age of uncertainty we are looking to lead meaningful, considered lives built on positive connections. Textiles have a key influence on our personal environment and have an important role to play in helping us achieve our own sense of utopia.

Issues of sustainability and eco-responsible products are top of the agenda for British mills, as they embrace innovative technologies and bring about a shift in aesthetics, mixing what were once impossible design elements to create unexpected fabrics.

Some will seek **SANCTUARY** and connect with the simple things of life: others will find a more nostalgic response to the current times and reconnect with **GALLANTRY**, or perhaps even follow the unapologetic and hedonistic desire to pursue **PLAYTIME**. The British mills this season look at the three themes of **SANCTUARY, GALLANTRY** and **PLAYTIME** as they develop their new collections.

These colours and directions were developed in conjunction with designers working for British textile companies

sanctuary

Sanctuary is all about simplicity and clarity and involves seeking out and appreciating simple, beautiful, functional textiles that are transformed through invention and structure. A new value is placed on the simple and more minimal approach as a no-frills mind-set begins to take hold. A story that is human-centric; compassionate and nurturing with a quiet understatement.

This theme looks for the essential components in fabrics, paring back on too much decoration and complication to create calm and carefully considered textiles. It's about marrying honest materials and craftsmanship that have easy and restrained tactility and finding the essential aesthetics of a product using the design code 'less is better'.

COLOURS 1 - 8

Calm and easy hues to use alone or in combinations. 1.honey TP 13-0919 2.wholemeal TP 18-5102 3.foliage green TP 17-4911 4.spa white TP 11-4001 5.delicate teal TP 14-4516 6.pale lime TP 16-0550 7.soft moss TP 14-0114 8.sky TP 17-3936

FABRICS

Clever manipulation of transparencies; chambray wool/linens; **tactile weave effects;** semi-plains; **satins & sateens;** simple plain weaves with subtle colour woven patterns; **crochet effects;** weaves that look like embroidery; **relief organza;** leno and other open structures; **fine tonal tailoring stripes on white ground;** super fine merino wools; **calendared linens;** mini geometric patterns; **chalk stripes;** compact yet fluid canvas; **lightweight cashmere flannels;** play on matt & shine; **soft yet dry handles;** undulating surfaces.

sanctuary



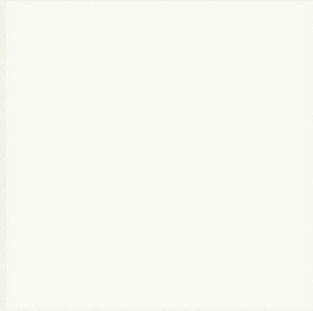
1



2



3



4



5



6



7



8

british colours & textiles - spring-summer 2020

gallantry

Being gallant conveys an ability to be charming and pragmatic, a sense of nostalgia as well as a personal touch that becomes the hallmark of luxury. Perfectly considered pieces where a new elegance emerges, soft technology joins with essential classics and the result is exquisitely posh, refined and - dare we say - cool. Design with a firm nod to our British textile history, adding value and narrative by reaching back to our roots and taking what was secure from the past and carrying it forward for the future.

The mills use references from tailoring, country wear and performance sportswear, to create new look fabrics with finishes that are beautifully considered and discreet in handle and weight, that are not quite 'city suits' or 'country tweeds' but a hybrid look that is equally at ease in urban and rural locations.

COLOURS 9 - 16

Bold and dashing shades for spirited textiles. 9. soft grey TP 15-4702 10. deep camel TP 18-0840 11. dashing navy TP 19-3938 12. clay TP 17-1115 13. noble red TP 19-1629 14. gentle blue TP 17-4015 16. bold khaki TP 19-0622 16. tanners brown TP 19-1228

FABRICS

tailoring and technical; wool and linen tailoring; **wool and cotton;** woollen and worsted fabrics; **glen checks and estate checks in linen blends;** mouliné yarn effects in cavalry twill; **summer flannels in pinstripes and checks;** wide university blazer stripes; **Prince of Wales with ultra fine warp and weft;** window panes with tonal 1+1 colouring; **hybrid gingham madras checks;** wool/mohair tonic suitings with lustre; **neat small scale geometrics;** contrast twist yarns for vintage looks; **robust twills;** slubby or knop yarns in weft for added texture; **wide herringbones.**

gallantry



9



10



11



12



13



14



15



16

british colours & textiles - spring-summer 2020

playtime

Pattern and decoration is on a grand scale, generous and exuberant, meeting our need for optimism and invention in this Playtime theme. Imperfection, disorderly clashes, mutated mixtures and unplanned outcomes are loved and treasured. It's a light-hearted and giggly-spirited creativity that's at play this season, one that is at ease with colours that are either muted and soft or bold and strident. Designers are aiming for unrivalled tactile interaction and personalisation with bold and defiant textiles that are injected with humour; it's the season that everyone is looking for something different.

We notice that exhibitions, museums and art installations are encouraging playful participation, stripping away the austere façade of the traditional gallery environment and inviting increased immersion and audience collaboration.

Welcome to the world of constant innovation, it seems we are to be amused.

COLOURS 17 - 25

Exuberant and mischievous colours. 17.charcoal TP 19-0203 18. pink mischief TP 17-1937 19. cloud white TP11-0608 20. lively turquoise TP 17-4429 21.sunshine TP 14-0952 22.purple bouquet TP 18- 3120 23. snooker green TP 18-6030 24.marigold TP17-1456 25.theatre red TP 18-1551

FABRICS

Collaged textures e.g. flat, bouclette, slub, twill, herringbone; space-dye and dip-dye yarns; **reworked tartans with neon colour highlights;** matelassé; **organdies;** lively stripes; **Irish linen chambray and changeants;** 'Chanel' type summer tweeds; **multicolour;** Lurex for effect; **blurry florals;** Bauhaus style checks; **relief bubble-effect jacquards;** butterflies & birds embroidered on tulle; **cloque geometrics;** compact double face satin; **irregular patterns and decorative stripes & checks mixed with florals;** cut thread techniques.

playtime



17



18



19



20



21



22



23



24



25

british colours & textiles - spring-summer 2020

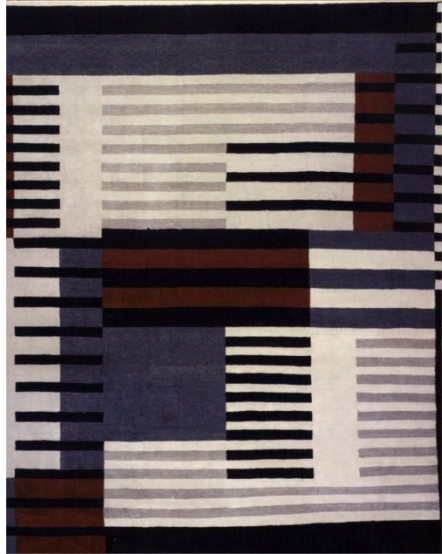
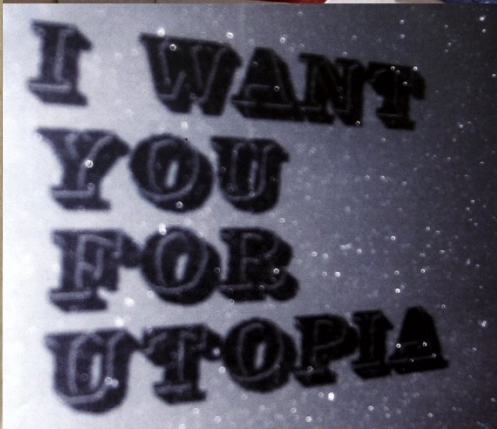
sanctuary

- simplicity
- airy
- comfort
- subtlety
- sustainability
- essential
- natural elements



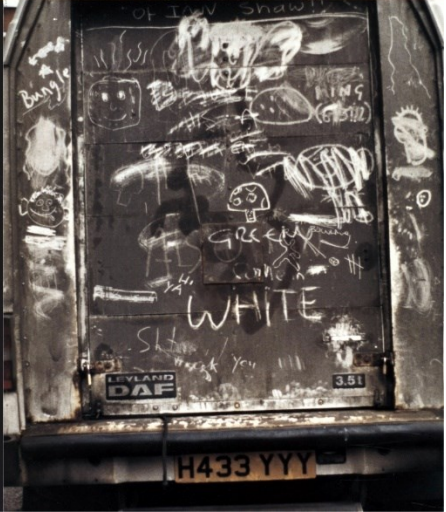
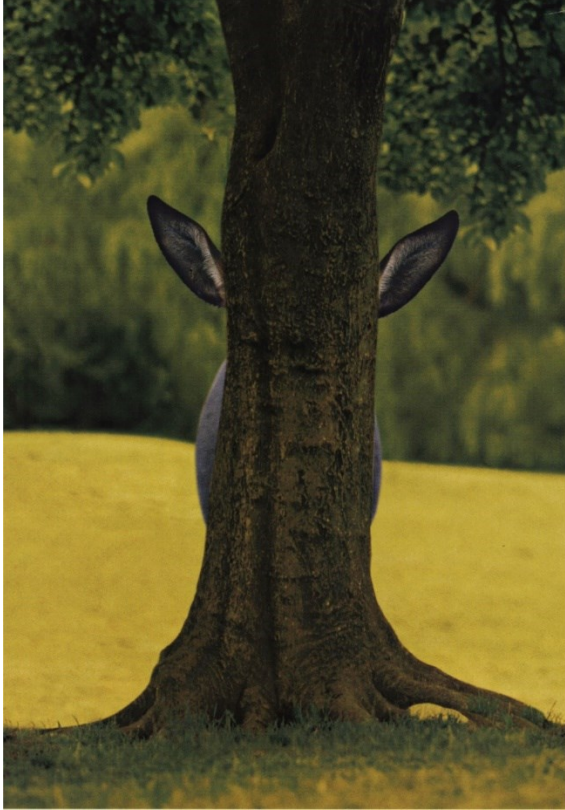
gallantry

- considerate
- emblems
- new/old
- daring
- gracious
- workwear
- historical refresh



playtime

- vibrant
- off-beat
- fearless
- extrovert
- agility
- fantasy
- impact



sanctuary

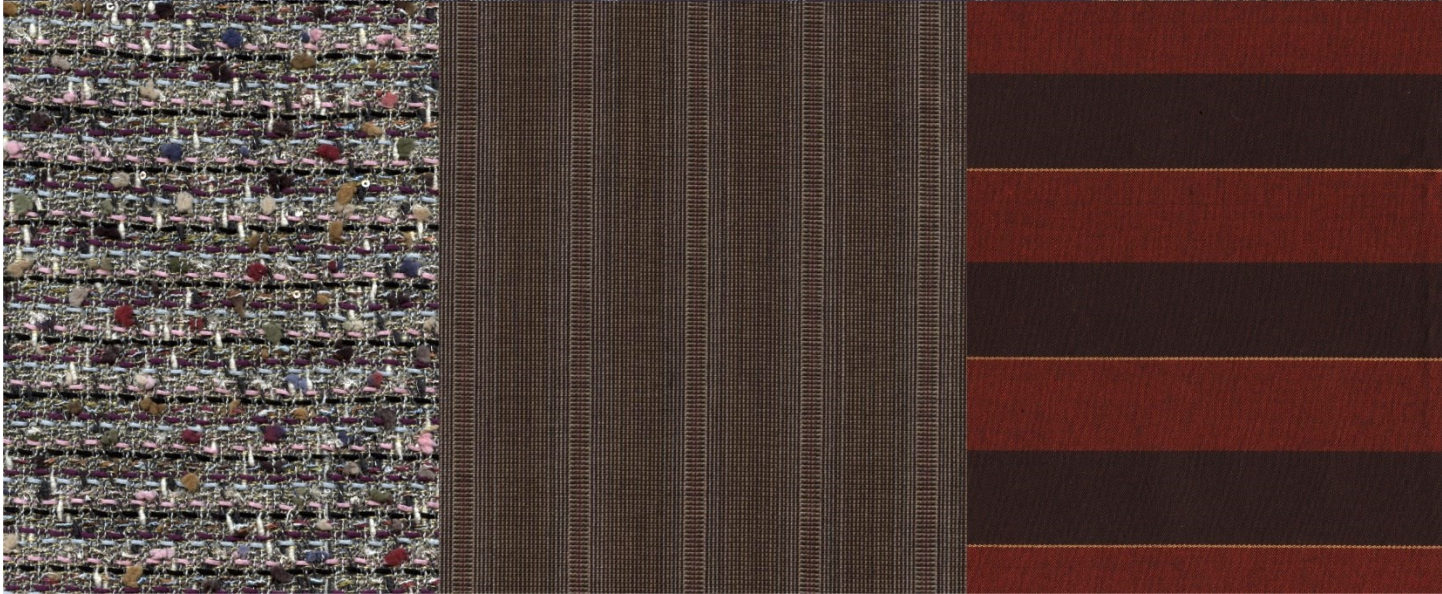
selection of fabrics from the British Mills
for spring-summer 2020

- open weaves
- weightless
- crepes
- irregular
- mixed compositions
- flowing fluidity
- eco textiles

gallantry

selection of fabrics from the British Mills
for spring-summer 2020

- wide stripes
- tonic suitings
- colour & weave
- glenchecks
- windowpanes
- tonal checks
- sophisticated geometrics



playtime

selection of fabrics from the British Mills
for spring-summer 2020

- multi-colour
- cut effects
- luminosity
- summer tweeds
- fancy yarns
- digital pointillism
- wrinkle effects



For further information, please contact textiles@ukft.org

ukft[®]
ukft.org